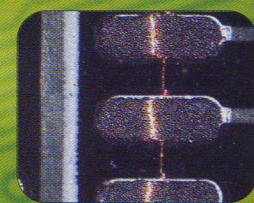


# CONTEK CT-500A

High-precision laser beams  
 0201 solution



Solder paste thickness, length,  
 weight and area measurement

Auto SPC Statistical Analysis

Improve Quality  
 Control Function

Chinese/English  
 Software Interface

Non-contact type  
 of laser measurement

Computer image processing

Consecutive Zooming

Electromagnetic  
 Lock Platform

CONTEK CT500A  
**New Launch**  
 SMT Tools

**New Experience !**

## Specification :

- |                             |  |
|-----------------------------|--|
| Theory of measurement       | : Non-contact type laser beam                                  |
| Measurement accuracy        | : $\pm 0.002\text{mm}$   |
| Repeat Measurement accuracy | : $\pm 0.004\text{mm}$   |
| Base size                   | : 324mm x 320mm  |
| Moveable platform           | : Electromagnetic lock platform with precise fine-tune handler |
| Moveable platform size      | : 320mm x 320mm  |
| Moveable platform itinerary | : 230mm x 200mm  |
| Camera system               | : Color CCD camera head  |
| Optical enlarge time        | : 30 -110 times  |
| Video size                  | : 600 x 480 pixels   |
| Lighting                    | : Circular LED light source                                    |
| Power source                | : 220 V / 50 Hz  |
| System dimension            | : 372mm (L) x 557mm (W) x 462mm (H)                            |
| System weight               | : 30 kg  |
| Measurement software        | : CT-500A / HSPC2000 (Windows 2k / XP platform)                |

# Laser Solder Paste Inspection System CT-500A

## Measurement Software CT-500A

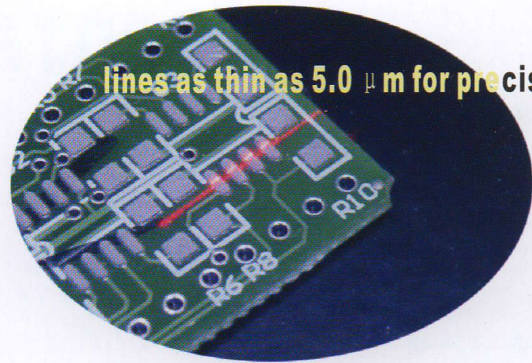
Video observation, image saving, thickness measurement, background lighting, laser beam lighting adjustment, area(Rectangular, Trapezium, Circle)/volumn/distance(X-axis, Y-axis)/angle measurement, 24 production lines can be memory/arbitrary number of products.

## S.P.C software HSPC2000

Base on the designated product, production line and reference date, user able to inquiry, delete, export (text and EXCEL table), browse, print the data. SPC can calculate the statistical average, maximum, minimum, differences, standard deviation, number of defect, defect rate, deflection, Ca, Cp, Cpk, Pp, Ppk, furthermore, SPC also able to mapping, preview, print X-BAR control chart and R control chart (Parameter of the control chart can be set).

## Measurement principles

Non-contact type laser measurement device produce the line-type beam by dedicated laser, using a certain inclination to project on the measured object (solder paste). As the measured object and surrounding chip exist of the height different, there are a gap of the measured object and chip can be observed corresponding to the laser beam. According trigonometrically function relations. The height different of the measured object and surrounding chip can be calculated by the gap distance of laser beam. Thus the rapid measurement of non-contact type can be achieved.



Non-contact type laser measurement system

## Application

Measure thickness of solder paste

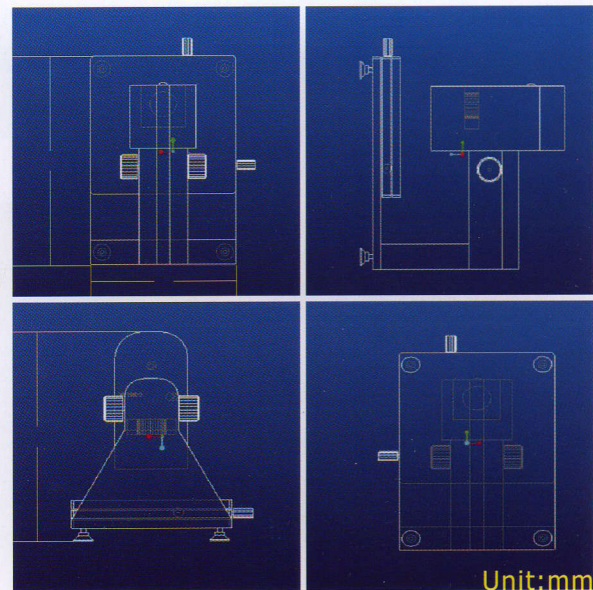
Calculate the Rectangular, Trapezium, Circle, area and volumn of solder paste

Thickness measurement of PCB printing, solder paste, solder pad, trace, coating, and etc.

Geometry inspection, X axis distance, Y axis distance, component alignment and angle of two lines.

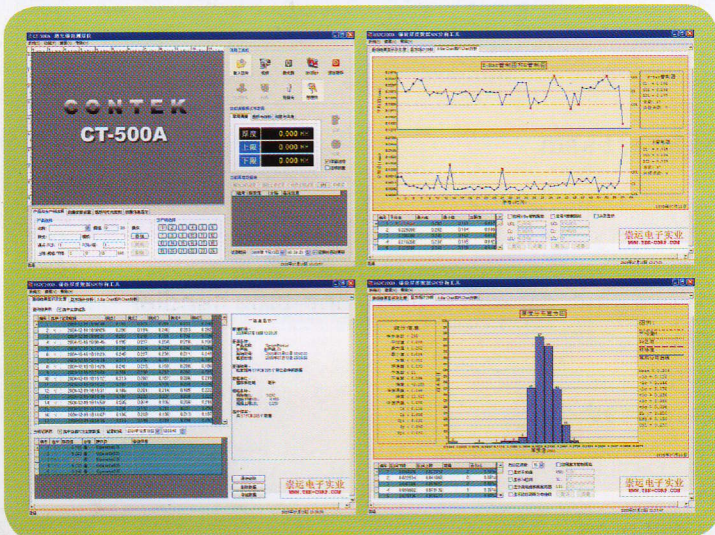
Video capture and processing

S.P.C analysis and statement exporting



## PC control system requirement

Windows Operating System (Windows2000/XP)  
Pentium® 4 or Celeron® 4 Series CPU  
256M DDR RAM  
64M VGA display card + video capture card  
17 inch CRT monitor, or (15 inch LCD display)  
40GB Harddisk  
PMH/UMC Solf-dog



## NEW SPEED INDUSTRIES PTE LTD



1, NORTH BRIDGE ROAD, #03-40,  
HIGH STREET CENTRE, SINGAPORE 179094.  
TEL: (+65) 8128 2389 Fax: 6338 7838  
Website : [www.newspeed.com.sg](http://www.newspeed.com.sg)  
E-Mail : [newspeed@pacific.net.sg](mailto:newspeed@pacific.net.sg)

AGENT: